



LOUTH
CHILDREN AND YOUNG PEOPLE'S
SERVICES COMMITTEE
EVIDENCE BASELINE REPORT, 2016



Louth



ALL-ISLAND RESEARCH OBSERVATORY
July 2016

**Louth Children and Young People's Services Committee,
Evidence Baseline Report, 2016**

CHAIR'S FOREWORD

As chair of the Louth CYPSC, I am pleased to launch the publication of the Louth CYPSC, Evidence Baseline Report, 2016.

The Children and Young People's Services Committees are an initiative of the Dept. of Children & Youth Affairs which involves the development of a local county based committee bringing together agencies working with children and young people, to engage in joint planning and coordinated delivery of services for children.

In working together, our focus is to ensure that statutory, community & voluntary agencies secure better developmental outcomes for children and young people in Co. Louth through more effective integration of existing services and interventions at local level.

This evidence baseline report and web-based mapping toolkit was undertaken to inform the Louth Children and Young People's plan in its future work. This plan will take account of the 5 national Outcomes for children outlined in the Better Outcomes, Brighter Futures National Policy Framework 2014-2020:

- Active and Healthy
- Achieving in all areas of Learning and Development
- Safe and Protected from Harm
- Economic Security & Opportunity
- Connected, Respected and Contributing

Population dynamics have proved it's importance in the development of our previous plan for Co. Louth. Demographic statistics are crucial for decision makers and practitioners for planning and strategically developing appropriate sustainable resources for children and young people. The overriding objective of the report is to support the ongoing development of quality services in Co. Louth. It will be of value to those who plan and provide children's services, and to professionals who have responsibility for the wellbeing and development of children and young people.







I would like to firstly acknowledge the work of the previous Area manager, Jim McGuigan who has given a huge commitment to the development of Louth CYPSC. I would also like to thank all the member organisations of the CYPSC for their advice and input into the coordination of the research and report. Their insight into current services including the identification of gaps, will be central to the development of key actions in our new plan.

I would also like to acknowledge the All Ireland Research Observatory (AIRO) and in particular Aoife Dowling, Senior Research Analyst, AIRO for their expertise and assistance in coordinating this report.

Grainne Sullivan

Chair, Louth Children and Young People's Services Committee

July 2016

	1. Introduction	13 to 19
	2. Demography	20 to 51
	3. Economy	52 to 77
	4. Education	78 to 99
	5. Health	100 to 119
	6. Security	120 to 127

2. DEMOGRAPHY



Population Change, 2006 to 2011

Indicator 2.1

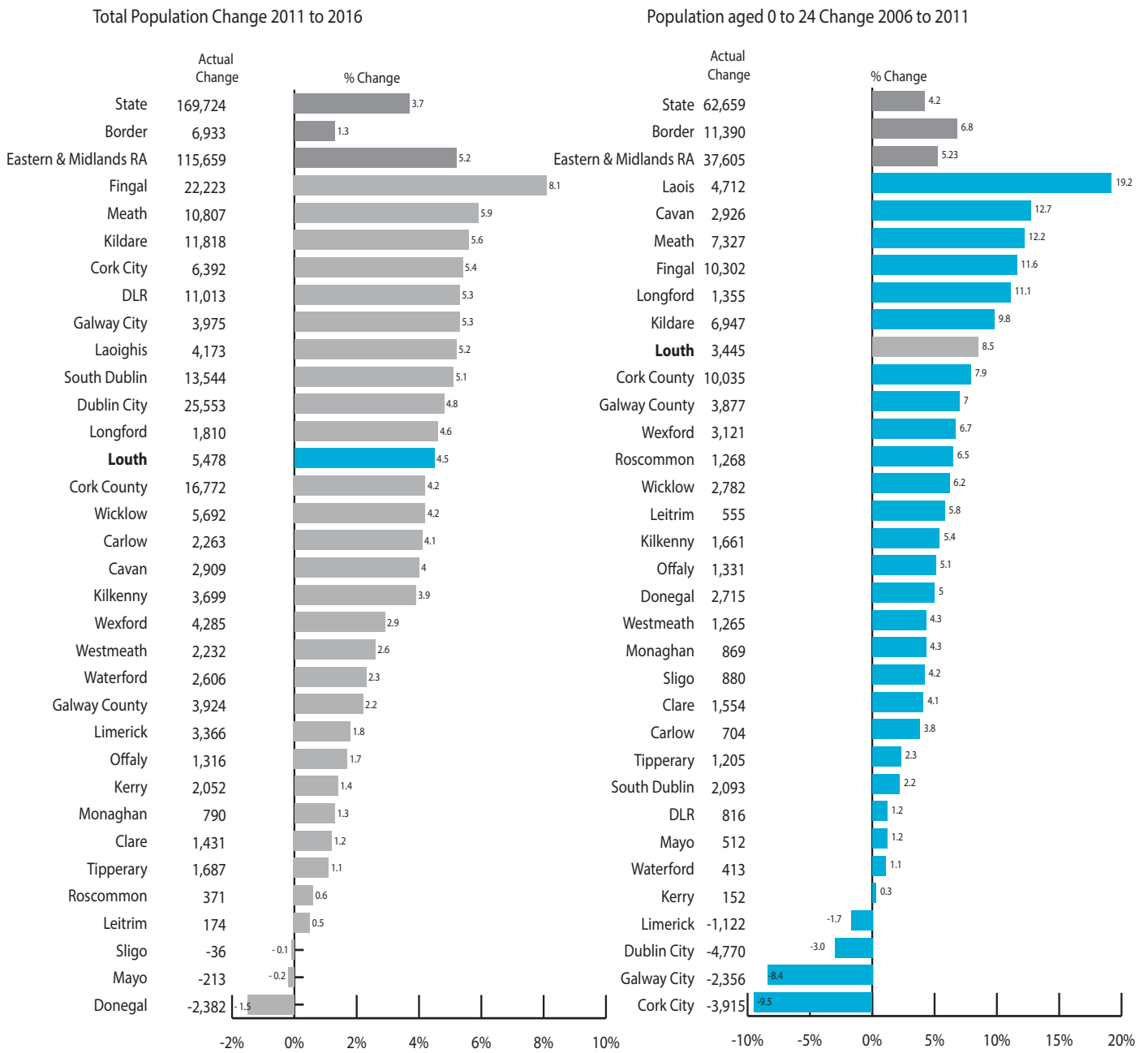


Figure 2.1: Total Population Change 2011 to 2016 & Population Aged 0 -24 Change 2006 to 2011 (Source CSO & AIRO)

How is Louth performing?
% Population Change, '11 to '16

11/31

Local Authority

1 is the highest, 31 is the lowest



State

Higher than average



Eastern & Midlands

Lower than average

How is Louth performing?
% Population 0-24 Years, '06 to '11

7/31

Local Authority

1 is the highest, 31 is the lowest



State

Higher than average

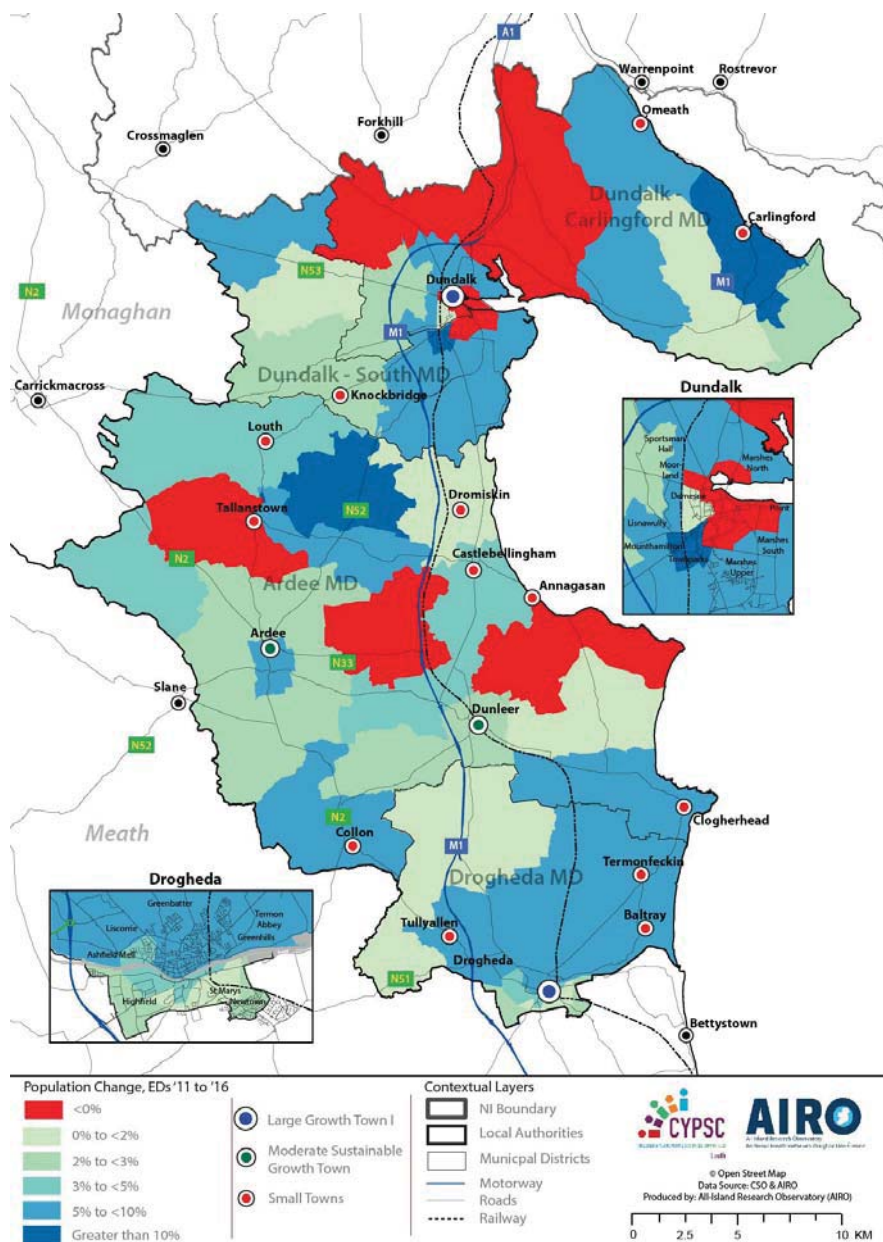


Eastern & Midlands

Higher than average

Indicator 2.1

Population Change 2006 to 2011



4.2%
increase in population between 2011 and 2016

11th
highest rate of increase of all local authorities

8
the number of EDs that witnessed a decrease in population between 2011 and 2016

Map 2.1: Population Change 2011 - 2016 (Source CSO & AIRO)

- In the time period between 2006 and 2011 the population aged 0-24 years increased significantly between 2006 and 2011 with an additional 8.5% or +3,445 now residing in the county – this rate of increase was the 7th highest in the State.
- In the 5 year period between 2011 and 2016 the population in Louth has increased by 4.5% (+5,478), the 11th highest rate of all local authorities in Ireland. This rate of increase is higher than the State (3.7%), however is lower than the Eastern & Midlands (5.2%) average.
- Between 2011 and 2016, population growth occurred in 35 of the 43 Louth Electoral Divisions (EDs) (Map 2.1). Of the eight EDs that experienced a decline in population over this period included Dundalk Urban No.2, No.4 and Faghart. Highest growth rates were generally in the south of the county and in areas within close proximity to major settlements. A total of 4 EDs increased their population by more 15% during this period: Carlingford (22.2%), Darver (19.4%) and Dundalk No.3 (18.0%).

Population Pyramid, 2011

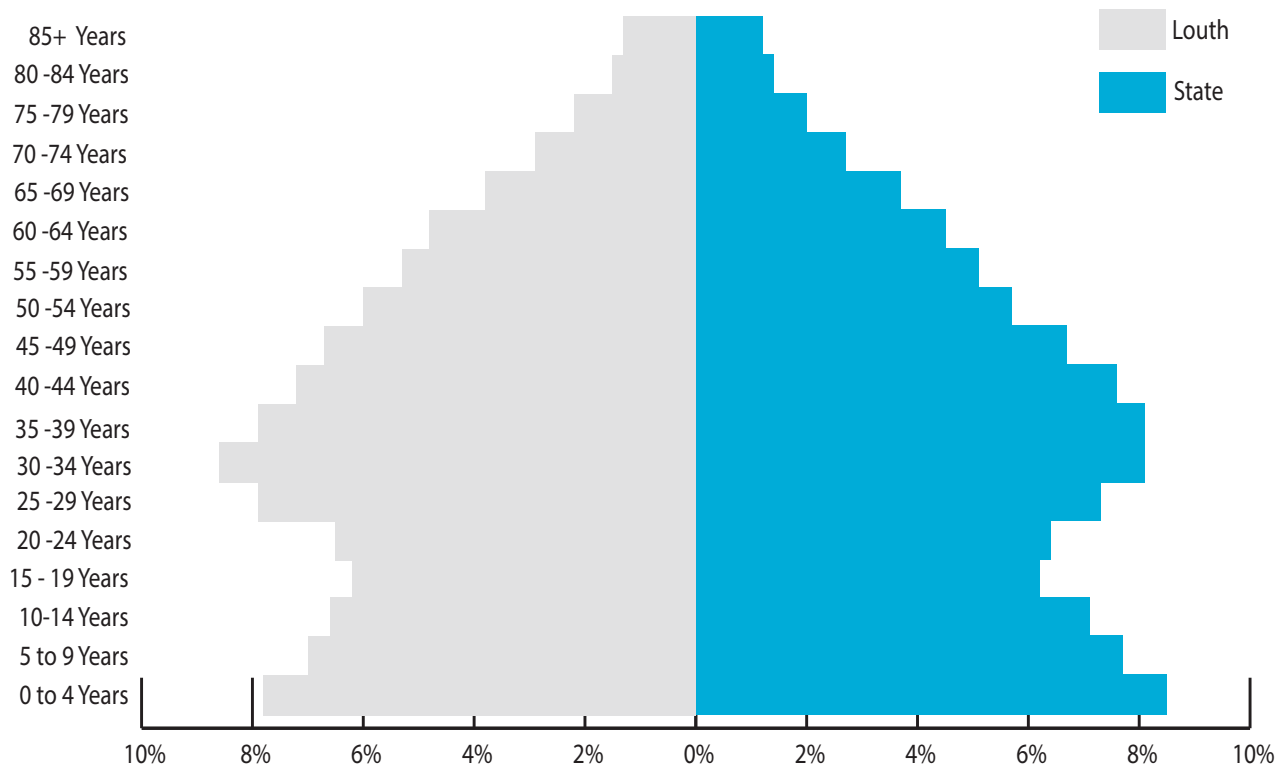
Indicator
2.2

Figure 2.2: Population Pyramid, 2011 (Source CSO & AIRO)

- The age structure or demographic profile of a population is influenced directly by patterns of natural increase (especially the role of fertility) and migration. The population pyramids in the above graphic illustrates the age structure of both Louth and the State.
- The structure of the Irish population is not distributed evenly throughout the whole country. An examination of the age structure of local authorities in Ireland illustrates the different characteristics of each area. Whilst there are some outliers such as Fingal (very young population); South Dublin (disproportionate sex ratio) and Donegal, Mayo and Kerry (high external migration of young population), many local authorities have a very similar age structure to the State.
- The age structure for Louth is similar to that of the State overall with a clear pyramid shape from age 30 up, a decline in the population from age 30 down to age 15, followed by a recovery in the younger age groups, reflecting the increasing birth rates in more recent years.

3. ECONOMY



Indicator 3.1 Labour Force Unemployment Rate, 2011

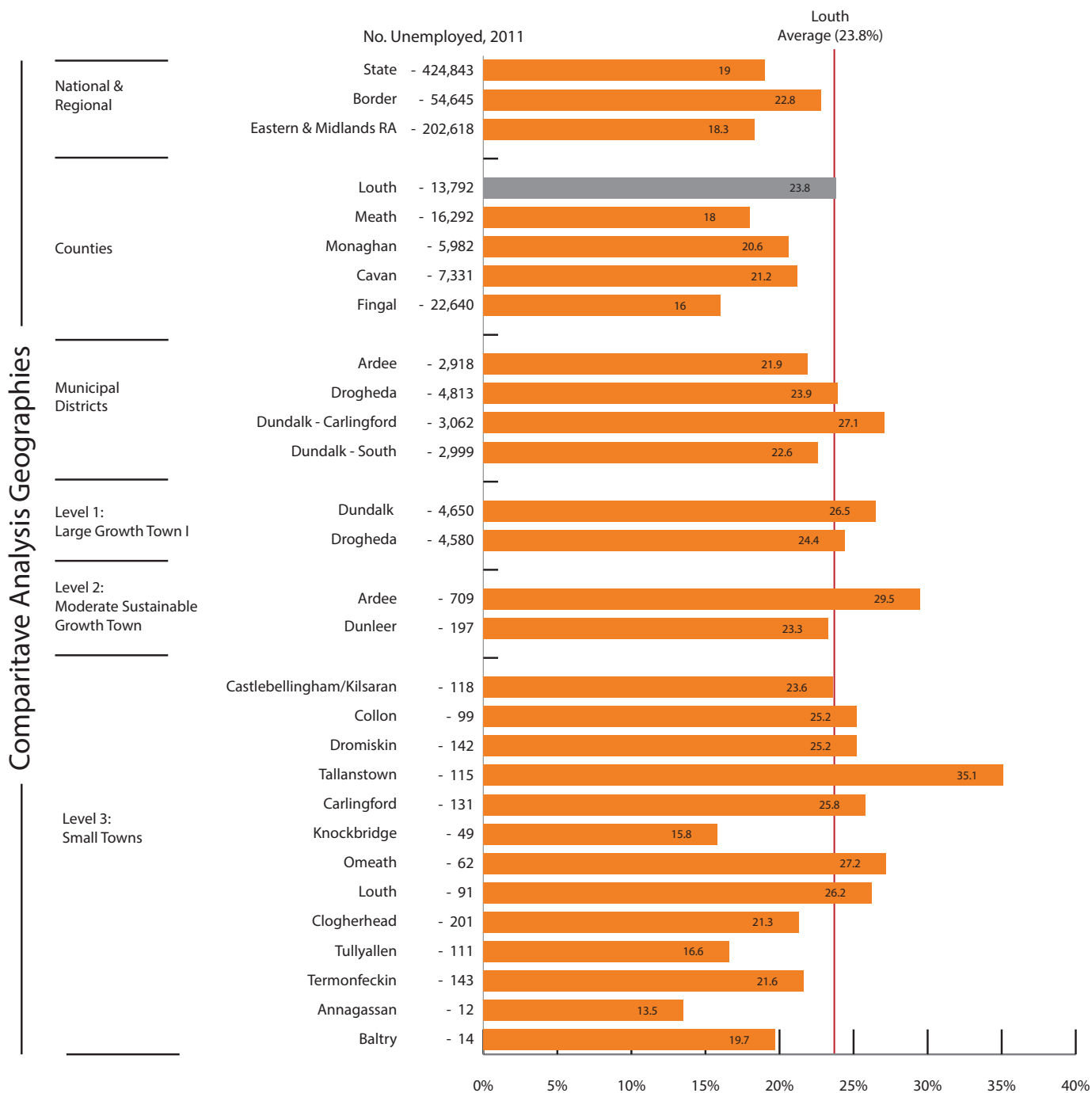


Figure 3.1: Labour Force Unemployment, 2011 (Source: CSO & AIRO)

How is Louth performing?
Labour Force Unemployment, 2011

15/31 Local Authority
1 is the highest, 31 is the lowest

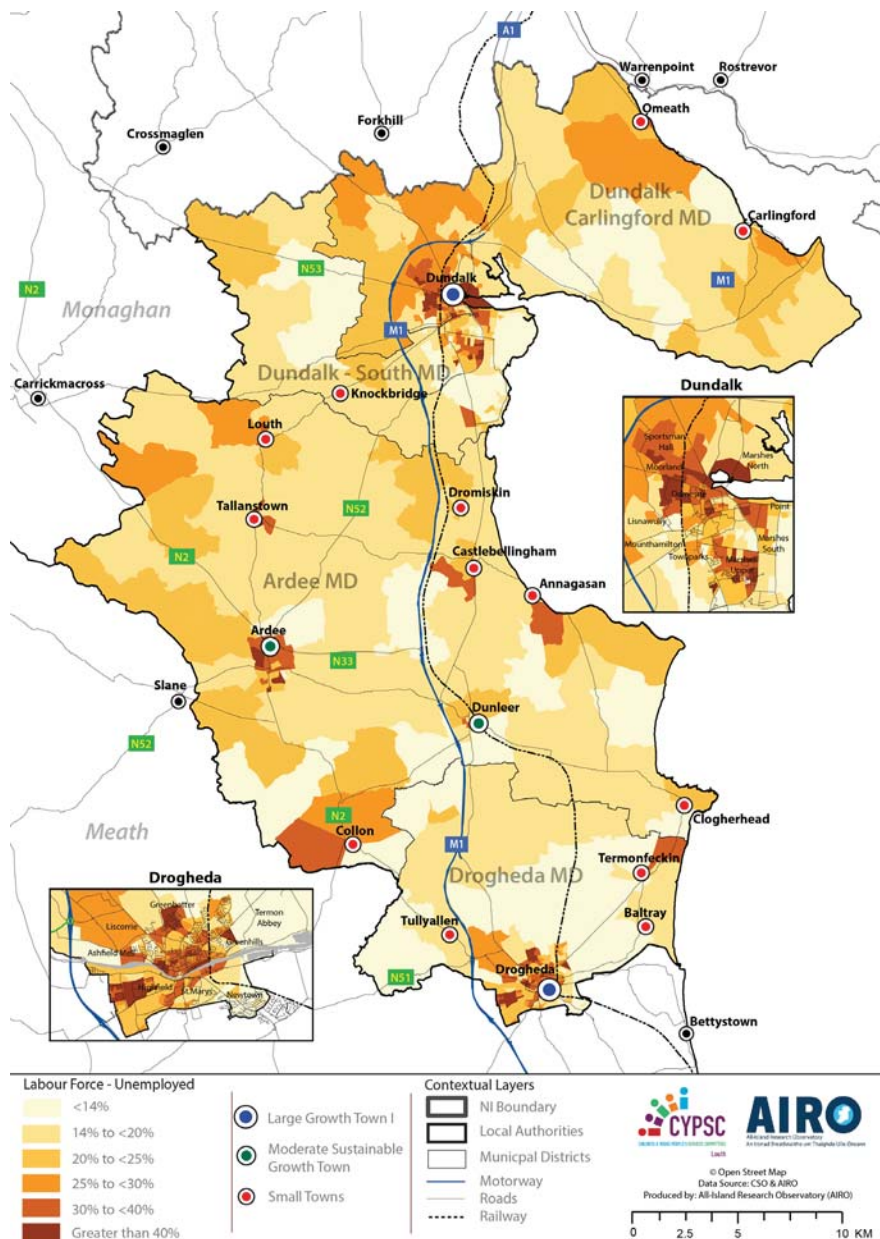
How is Louth performing?
% Labour Force Unemployment, 2011

4/31 Local Authority
1 is the highest, 31 is the lowest

↑ State
Higher than average

↑ Eastern & Midlands
Higher than average

Labour Force Unemployment Rate, 2011

Indicator
3.1**23.8%**of the labour force
in Louth were
Unemployed
in 2011

Over

1 in 4of the persons
Unemployed
in the
Border Region live
in Louth**66%**of the
Unemployed
persons in Louth
are living in the
two largest towns
- Dundalk and
Drogheda

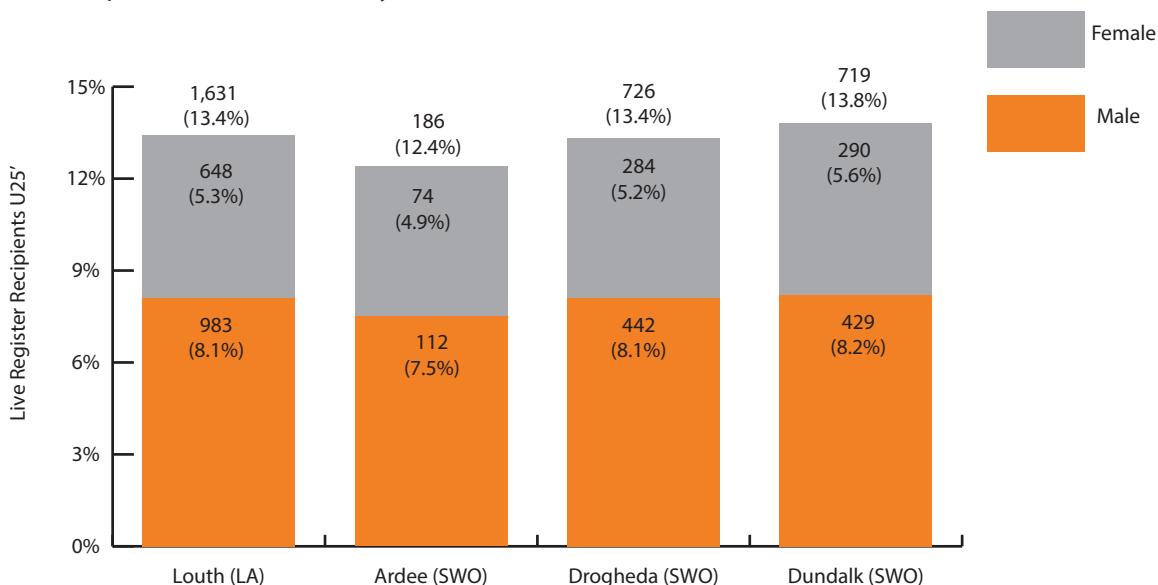
Map 3.1: Labour Force Unemployment, 2011 (Source: CSO & AIRO)

- The total population classed as unemployed (both unemployed and looking for first job) in county Louth is 13,792. This figure represents an unemployment rate of 23.8% of the total labour force of 58,024 (population aged 15+ At Work and Unemployed). Louth has the 14th highest number classed as unemployed and the 4th highest unemployment rate.
- At the MD level, the unemployment rate is highest in Dundalk – Carlingford MD where the rate is 27.1% (3,062). In total, eight settlements in the urban hierarchy have more than 25% unemployment within the labour force. Highest rates are in settlements such as Tallanstown (35.1%), Ardee (29.5%), Omeath (27.2%) and Louth (26.2%).
- The map detailed above provides an illustration of rates at the Small Area (SA) level in Louth. In particular, the map identifies some areas with extremely high levels of unemployment in the main urban settlements of Dundalk, Drogheda and Ardee where rates can be in excess of 40%.

**Indicator
3.2**

Youth Unemployment, 2016

Live Register Recipients U25, M4 2016 by Gender- Social Welfare Office



Live Register Recipients, M4 2006 to 2016 - Louth County

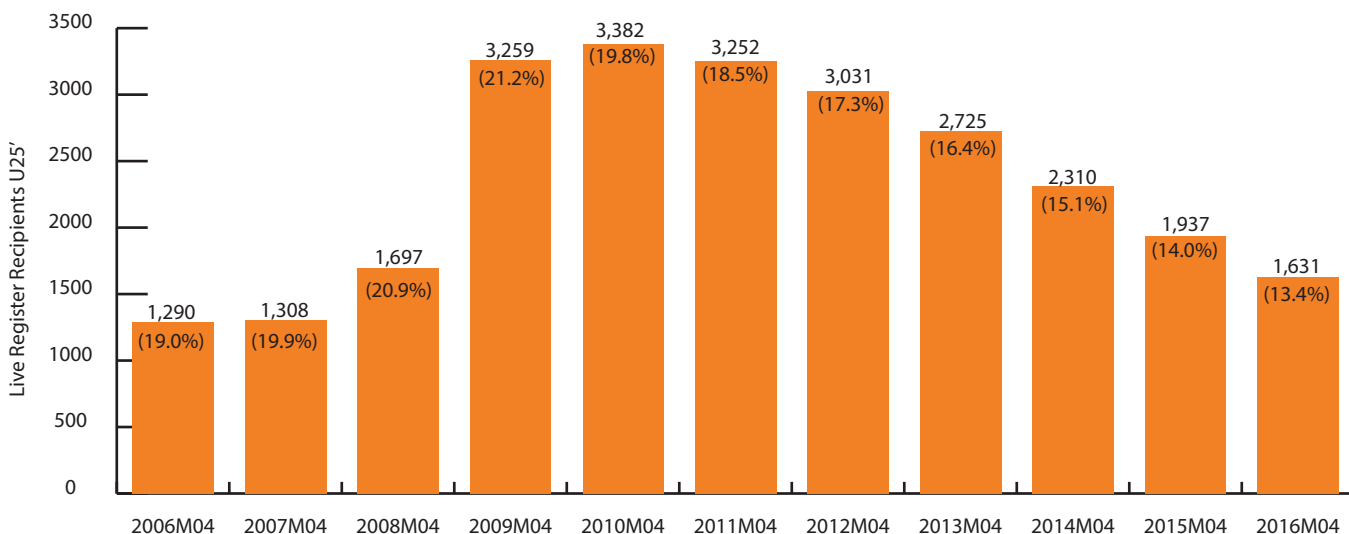


Figure 3.2: Live Register, April 2016 (Source: CSO & AIRO)

- The Live Register is not designed to measure unemployment. It includes part-time workers, seasonal and casual workers entitled to Jobseeker’s Benefit or Jobseeker’s Allowance. However, the Live Register does provide a very useful means of monitoring unemployment trends within a local authority and can also be used to look at youth unemployment rates.
- As of April 2016, there were a total of 1,631 young people (under 25 years) on the Live Register in Louth. This equates to approximately 13.4% of the total live register recipients in the county. The majority of these young people are recipients at the Drogheda (726) and Dundalk (719) SWOs with lower numbers registered at Ardee (186). At 13.8% Dundalk has the highest percentage of those signing on aged under the age of 25 years.
- The bottom graphic provides time series illustration of Under 25 Live Register levels from 2006 to 2016. In recent years, the numbers have started to decline although the M4 2016 total has still more than 300 extra recipients than the case in 2007.

4. EDUCATION



Indicator 4.1

Highest Level of Education Attainment, 2011

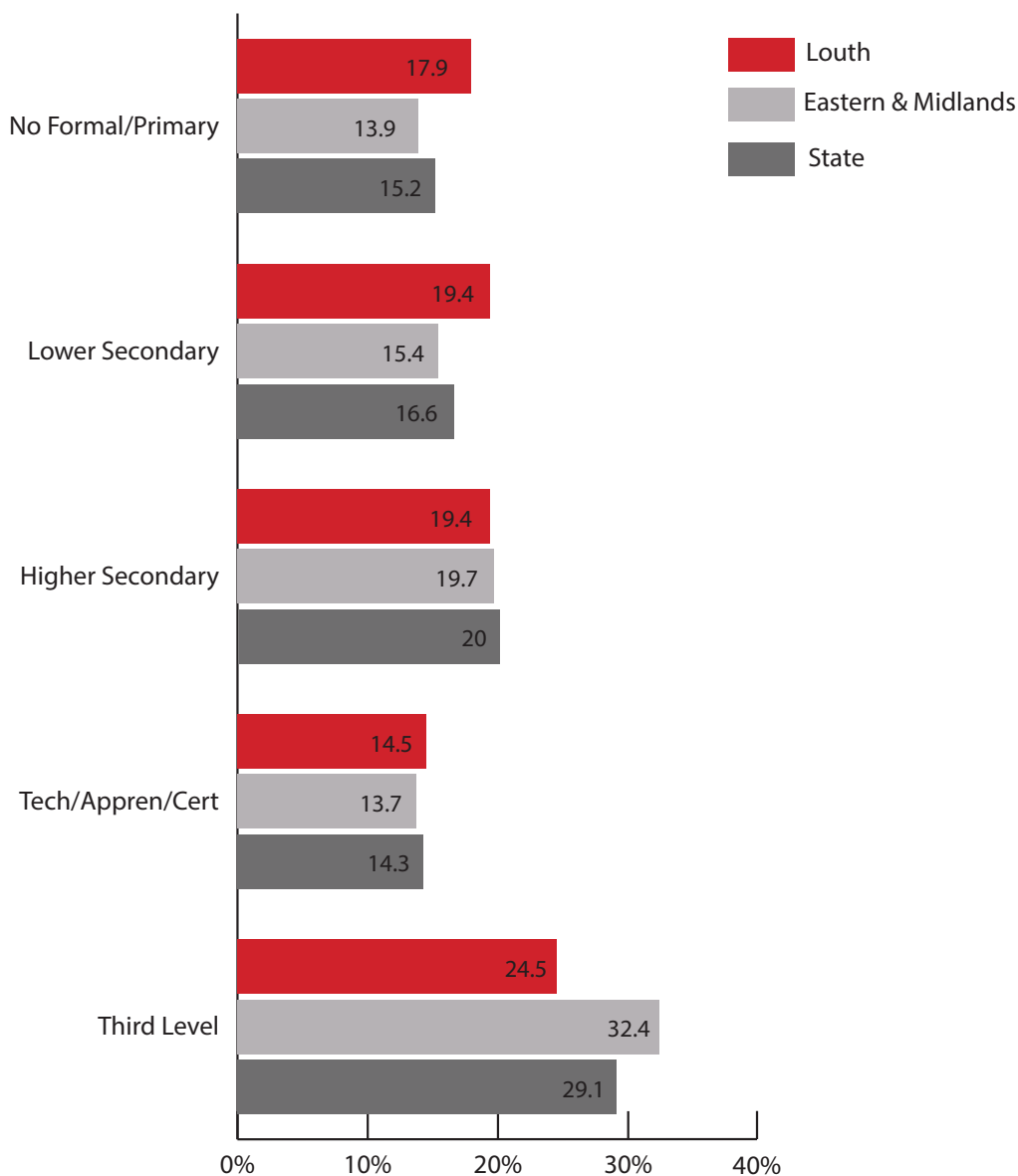


Figure 4.1: Highest Level of Education Attainment, 2011 (Source: CSO & AIRO)

How is Louth performing?
% No Formal Primary, 2011

8/31

Local Authority
1 is the highest, 31 is the lowest

↑

State
Higher than average

↑

Eastern & Midlands
Higher than average

How is Louth performing?
% Third Level, 2011

20/31

Local Authority
1 is the highest, 31 is the lowest

↓

State
Lower than average

↓

Eastern & Midlands
Lower than average

- There is a significant difference between education attainment levels in Louth and the State. In general, attainment levels in Louth have a much higher proportional share in the low education levels and consequently a lower proportional share in higher education.
- On a comparative basis, the population in Louth has a moderate level of education attainment. At the lower end of the scale, Louth has the 8th highest rate (17.9%) of low education attainment (No Formal/Primary only) and the 5th highest rate (19.4%) of medium education attainment (Lower Secondary).
- At 19.4%, Louth also has a low proportion of its population with an education attainment level classed as Higher Secondary – the 10th lowest rate in the State. In contrast to this, the population in Louth has the 12th lowest rate (24.5%) of education attainment classed as Third Level.

Educational Attainment of Mothers, 2011

Indicator
4.2

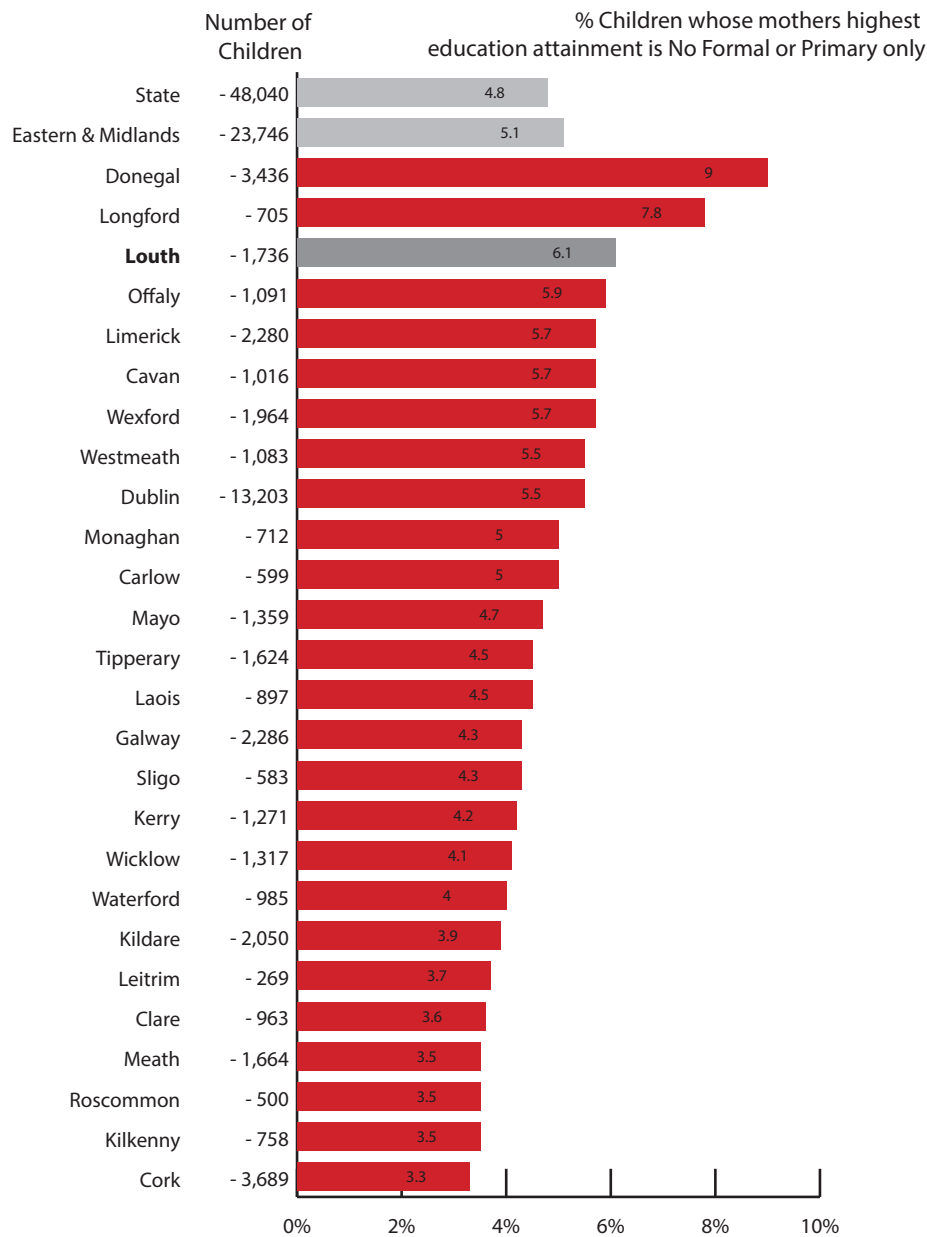


Figure 4.2: Highest Level of Education Attainment of Mothers, 2011 (Source: CSO & AIRO)

How is Louth performing?
Edu. of mother - No Formal Primary, 2011

3/26

County
1 is the highest, 26 is the lowest

↑

State
Higher than average

↑

Eastern & Midlands
Higher than average

- The above graphic looks at the highest level of educational attainment of mothers in Louth in 2011. In particular, the graphic focuses on level of low educational attainment – either no formal education or primary education.
- In total there are 1,736 children with mothers with very low levels of education. This number equates to approximately 6.1% of all children living in the county and is the 3rd highest rate in the country and as such much higher than the State average of 4.8%. Only Longford (7.8%) and Donegal (9%) have higher rates.

5. HEALTH



Indicator 5.1

Persons aged 0-14 Years with a Disability, 2011

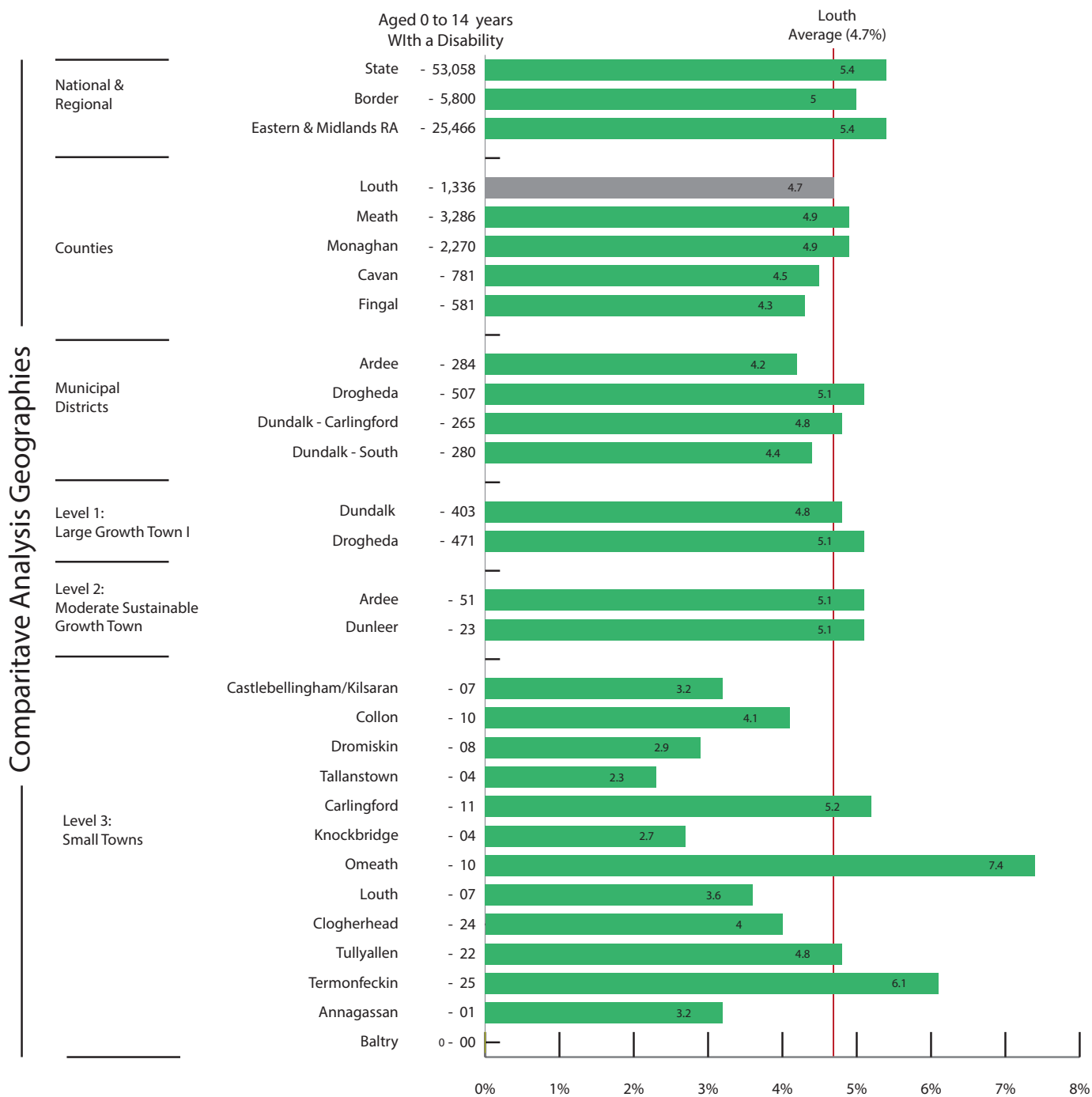


Figure 5.1: Persons aged 0 -14 with a disability, 2011 (Source: CSO & AIRO)

How is Louth performing?
Persons 0 -14 with a disability, 2011

18/31 Local Authority
1 is the highest, 31 is the lowest

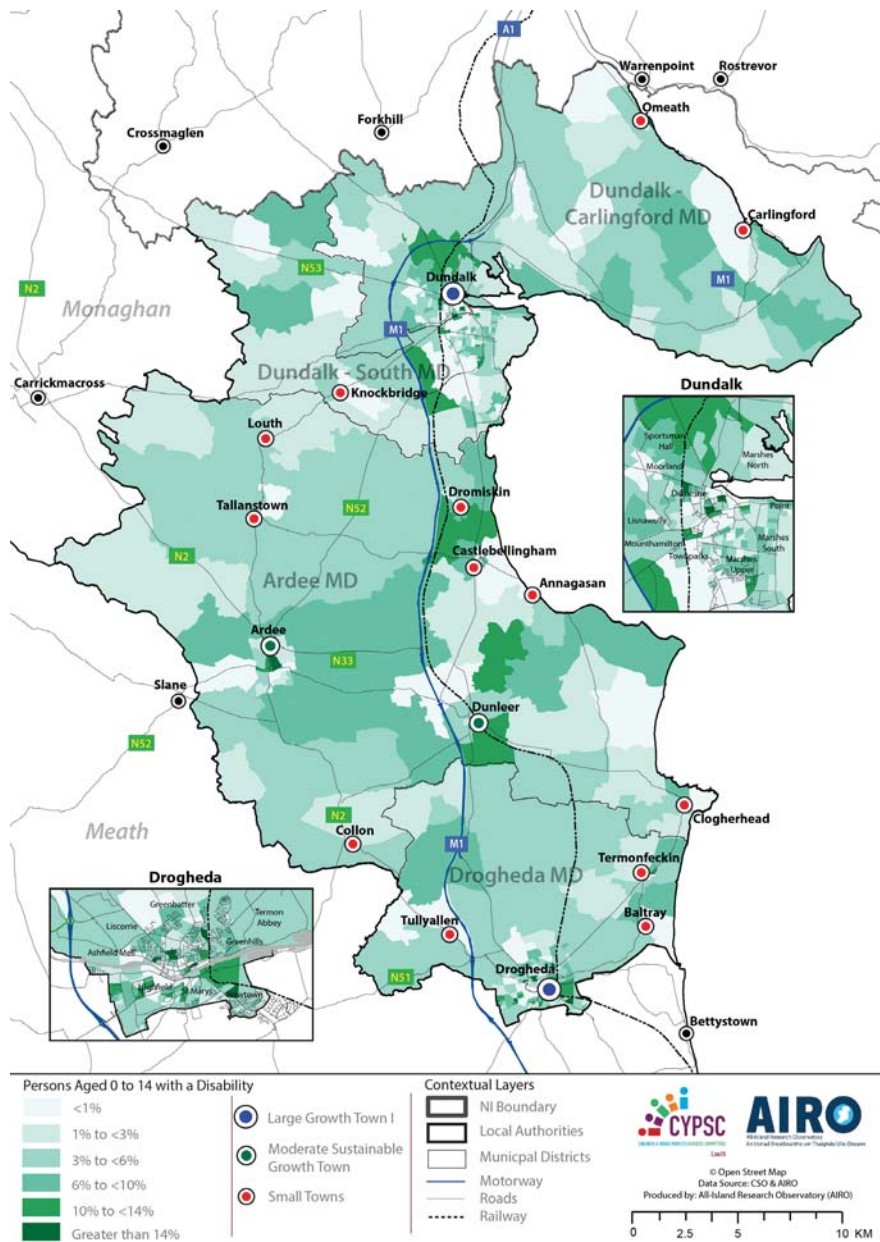
How is Louth performing?
% Persons 0 -14 with a disability, 2011

18/31 Local Authority
1 is the highest, 31 is the lowest

↓ State
Lower than average

↓ Eastern & Midlands
Lower than average

Persons aged 0-14 Years with a Disability, 2011

Indicator
5.1**4.7%**

of persons aged
0 to 14 in Louth
had a Disability in
2011

Just under

1 in 4

of persons aged 0
to 14 with a
Disability in the
Border Region live
in Louth

65%

of persons aged 0
to 14 with a
disability in Louth
are living in the
two largest towns
- Dundalk and
Drogheda

Map 5.1: Persons aged 0-14 with a Disability (Source: CSO & AIRO)

- According to the 2011 Census there are a total of 1,336 children aged 0-14 with a disability residing within Louth. This equates to a rate of 4.7% of the 0-14 population. This is the 13th lowest rate in the country and is lower than both the State (8.9%) and Eastern and Midlands average (9.1%).
- At the MD level, rates are higher in the Drogheda MD (5.1%) and Dundalk - Carlingford MD (4.8%). The map also highlights that rates are generally higher in the more urban parts of the county with large parts of Rural Louth with low rates – primarily due to these areas having a much older demographic.

6. SECURITY



Referrals to the Garda Youth Diversion Programme, 2013

Indicator 6.1

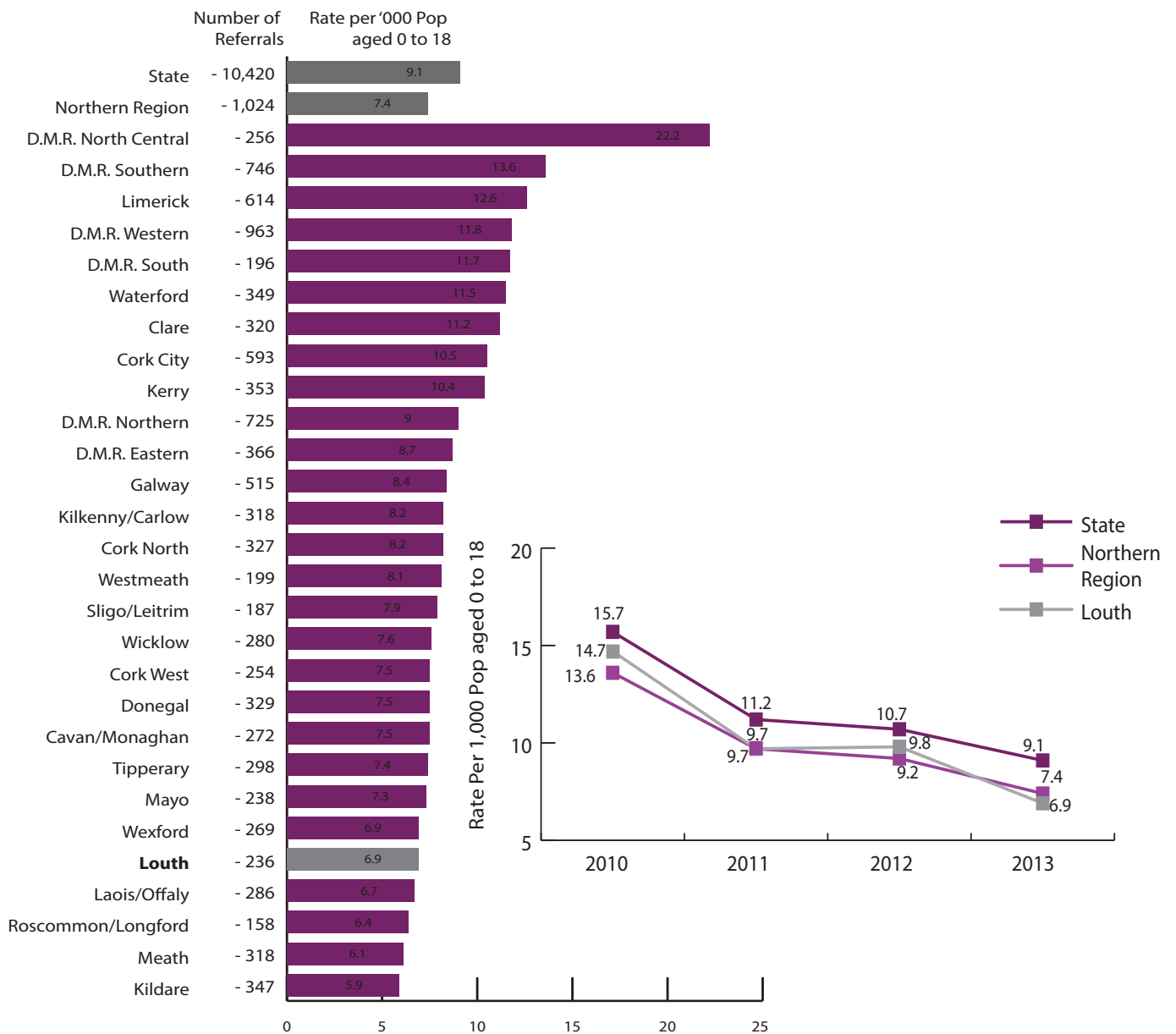


Figure 6.1: Rate of Referrals to the GYDP, 2013 (Source: An Garda Síochána & AIRO)

How is Louth performing?
Referrals to the GYDP, 2013

24/28

Garda Divisions
1 is the highest, 28 is the lowest



State
Lower than average



Northern Region
Lower than average

- The Garda Youth Diversion Programme (GYDP) is operated by the Garda Youth Diversion Office and provides that in certain circumstances a young person under 18 years of age who freely accepts responsibility for a criminal incident can be cautioned and supervised as an alternative to prosecution. There were 236 referrals to this programme in Louth in 2013. This figure equates to 6.9 per '000 persons aged less than 18 in Louth and was the 5th lowest in the country.
- Since 2010, the rate of young person's being referred to this programme has decreased from 14.7 to 6.9 in 2013. In the same time period the State recorded a similar level of decrease as referral rates dropped from 15.7 to 9.1.



IMPROVING EVIDENCE INFORMED PLANNING

Phone: +353 1 7086688

Email: airo@nuim.ie

Website: www.airo.ie

Twitter: [AIRO_MU](https://twitter.com/AIRO_MU)

Iontas Building, MUSSI, Maynooth University, Maynooth, Co. Kildare, Ireland